

Table with 10 rows (10.0-10.7) providing technical specifications and guidelines for building construction, including roof types, materials, and structural requirements.

III. TEXTLICHE FESTSETZUNGEN

Table with 10 rows (1.0-1.1.3) detailing general building regulations such as floor area ratios, height restrictions, and setbacks.

Table with 10 rows (1.1-1.2) providing specific guidelines for facade design, window placement, and landscaping.

Table with 10 rows (1.2-1.3) detailing rules for garden and ancillary buildings, including height and setback requirements.

Table with 10 rows (1.3-1.5) detailing rules for garages, carports, and parking spaces, including structural and safety requirements.

- List of general building regulations covering terrace construction, roof types, and landscaping requirements.

Table with 2 rows (2.0-2.1) detailing roof construction specifications, including materials and structural requirements.

Table with 2 rows (2.2-2.3) detailing facade construction specifications, including materials and window treatments.

Table with 3 rows (3.0-3.2) detailing regulations for garages and ancillary buildings, including height and setback rules.

Table with 4 rows (4.0-4.2) detailing regulations for garages and ancillary buildings, including height and setback rules.

Table with 5 rows (5.0-5.4) detailing regulations for garages and ancillary buildings, including height and setback rules.

Table with 6 rows (6.0-6.2) detailing regulations for garages and ancillary buildings, including height and setback rules.

Table with 7 rows (7.0-7.2) detailing regulations for garages and ancillary buildings, including height and setback rules.

- List of general building regulations covering terrace construction, roof types, and landscaping requirements.

Table with 2 rows (2.0-2.1) detailing roof construction specifications, including materials and structural requirements.

Table with 2 rows (2.2-2.3) detailing facade construction specifications, including materials and window treatments.

Table with 3 rows (3.0-3.2) detailing regulations for garages and ancillary buildings, including height and setback rules.

Table with 4 rows (4.0-4.2) detailing regulations for garages and ancillary buildings, including height and setback rules.

Table with 5 rows (5.0-5.4) detailing regulations for garages and ancillary buildings, including height and setback rules.

Table with 6 rows (6.0-6.2) detailing regulations for garages and ancillary buildings, including height and setback rules.

Table with 7 rows (7.0-7.2) detailing regulations for garages and ancillary buildings, including height and setback rules.

- List of general building regulations covering terrace construction, roof types, and landscaping requirements.

Table with 2 rows (2.0-2.1) detailing roof construction specifications, including materials and structural requirements.

Table with 2 rows (2.2-2.3) detailing facade construction specifications, including materials and window treatments.

Table with 3 rows (3.0-3.2) detailing regulations for garages and ancillary buildings, including height and setback rules.

Table with 4 rows (4.0-4.2) detailing regulations for garages and ancillary buildings, including height and setback rules.

Table with 5 rows (5.0-5.4) detailing regulations for garages and ancillary buildings, including height and setback rules.

Table with 6 rows (6.0-6.2) detailing regulations for garages and ancillary buildings, including height and setback rules.

Table with 7 rows (7.0-7.2) detailing regulations for garages and ancillary buildings, including height and setback rules.

- Präambel: Introduction and purpose of the plan.
- Bestandteile der Satzung: Components of the ordinance.
- Anlagen zur Satzung: Attachments to the ordinance.

Table with 10 rows (1.0-1.5) detailing general building regulations, including height, setbacks, and landscaping requirements.

Table with 10 rows (3.6-4.4) detailing specific building regulations, including setbacks and landscaping requirements.

Table with 10 rows (9.0-9.3) detailing specific building regulations, including setbacks and landscaping requirements.

- List of general building regulations covering terrace construction, roof types, and landscaping requirements.

Table with 2 rows (2.0-2.1) detailing roof construction specifications, including materials and structural requirements.

Table with 2 rows (2.2-2.3) detailing facade construction specifications, including materials and window treatments.

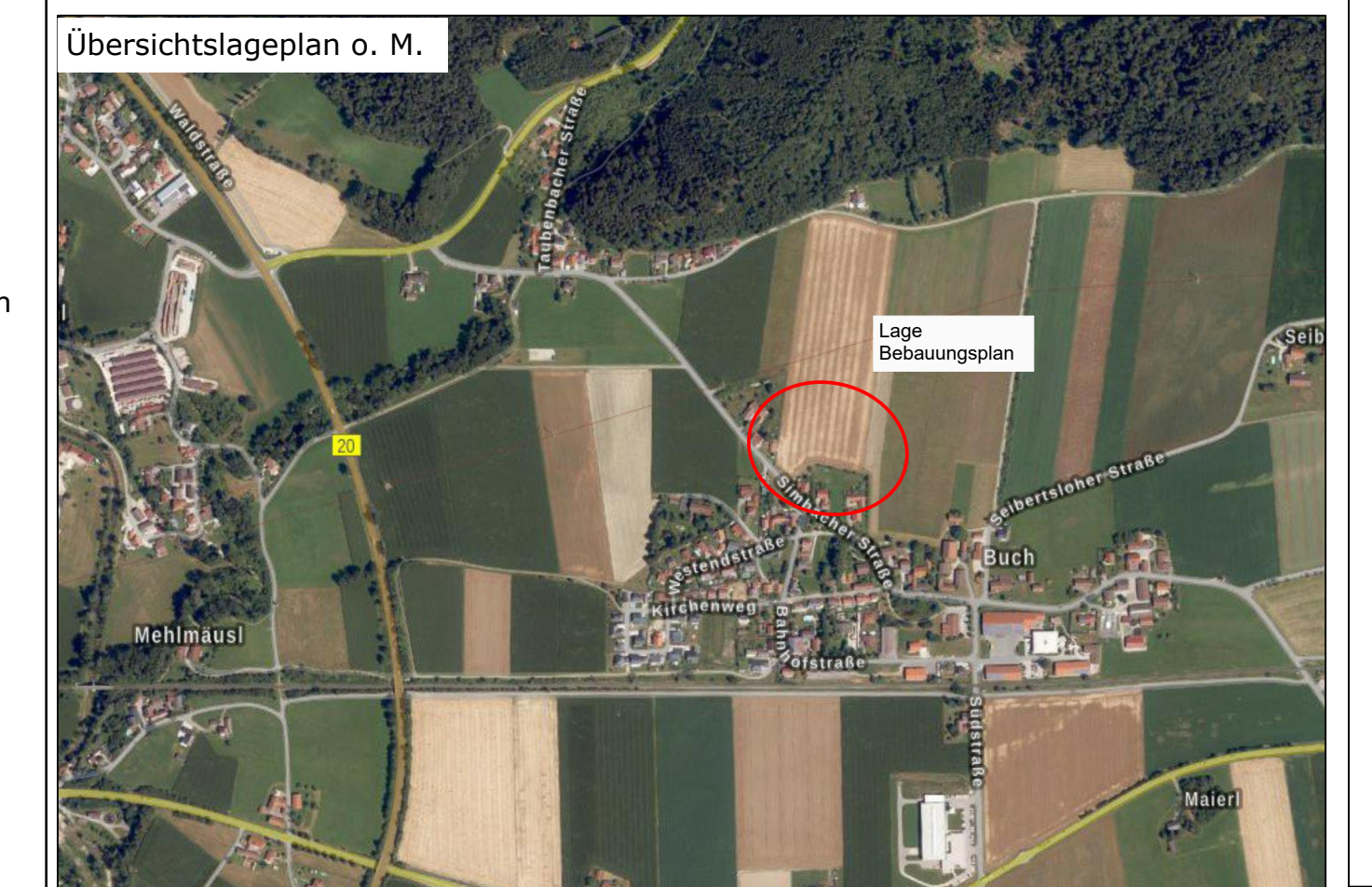
Table with 3 rows (3.0-3.2) detailing regulations for garages and ancillary buildings, including height and setback rules.

Table with 4 rows (4.0-4.2) detailing regulations for garages and ancillary buildings, including height and setback rules.

Table with 5 rows (5.0-5.4) detailing regulations for garages and ancillary buildings, including height and setback rules.

Table with 6 rows (6.0-6.2) detailing regulations for garages and ancillary buildings, including height and setback rules.

Table with 7 rows (7.0-7.2) detailing regulations for garages and ancillary buildings, including height and setback rules.



Section titled 'Bebauungsplan mit integrierter Grünordnung 'WA Buch'' including the logo of the Gemeinde Julbach and the Landkreis Rottal-Imn.

Administrative section containing 'Verhaltensvermerk', 'Umfeld', 'Nachrichtliche Übernahmen', 'Umfeld', 'Entwurfsbearbeitung', 'Entwurfsverfasser', and 'Jocham + Kellhuber' information.

